

K2 Water Cooler

Quick Start Guide

ENSURE THE COOLER STANDS UPRIGHT FOR 24 HOURS BEFORE PLUGGING IT IN.

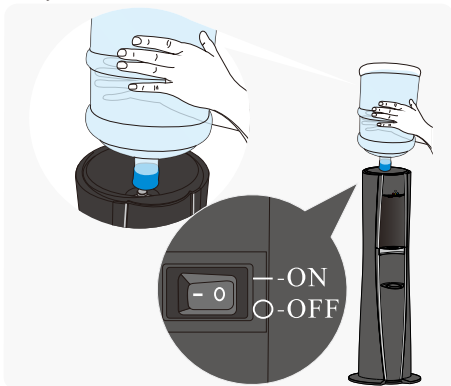
OPERATION

1. Stand cooler upright on flat, smooth floor. Align sides plate with base, and slide into base to locked position. The side plates are inserted so that the inner faces mount flush in the rear of the cooler. There will be an open triangular area in the front.
2. Place the water cooler indoors, on a flat level surface in a cool shaded the location near a grounded wall outlet. Position water dispenser so that the back of the unit is a minimum of 4 inches away from the wall to ensure proper ventilation.



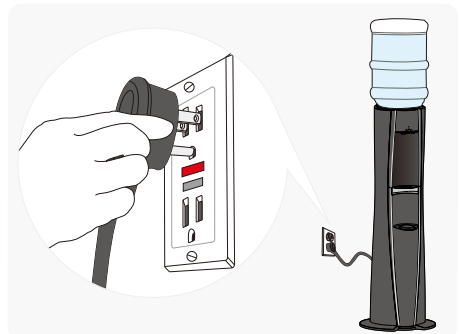
3. Install a bottle of water on the top of the water cooler. **Note: To prevent water leaks, a NON-SPILL Bottle Cap MUST be installed on the bottle.** Ensure that the hot water switch near the top of the rear panel is turned off. Light will be **green** when the hot water switch is in the off position.

The light shows as **RED** when the power to Hot System is turned on.

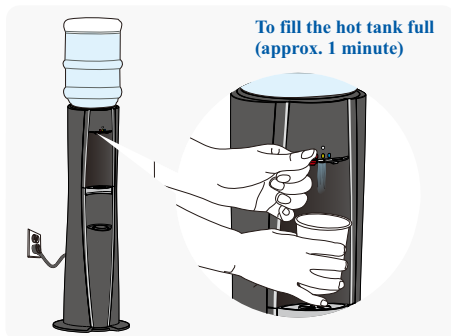


4. Plug power supply cord into receptacle. Please ensure that cooler is set up so as access to the power outlet and plug is unobstructed.

Note: To provide additional protection from the risk of shock, this unit MUST be connected to a ground fault circuit interrupter (GFCI) outlet at all times. Use of an extension cord will void any warranties.

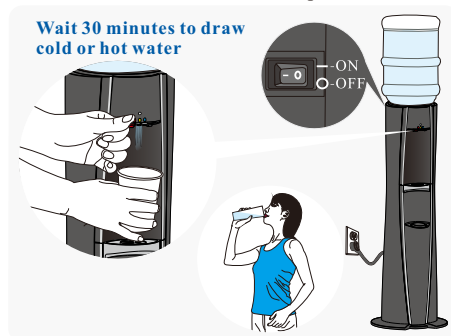


5. Depress the **Hot** water lever to fill the hot tank. When water begins to flow from the hot outlet the tank is full (approx. 1 minute). The **Cold** water tank will fill automatically (approx. 3 minutes).

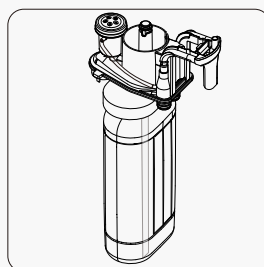
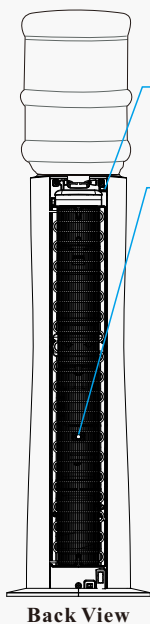
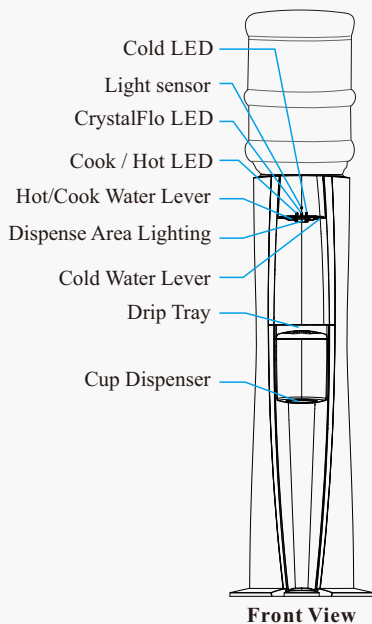


6. **Ensure Priming of Hot water system is complete before starting this step**

Turn on the hot water switch. To disable the heating function (**Hot Water**), turn off the hot water switch. **DO NOT** draw water from the cooler for about 30 minutes to let the water cool or heat. Optimum water temperatures will be reached after 1-2 hours of operation.



EXTERNAL PARTS OF THE WATER COOLER



**CrystalFlo Water Cartridge
replaceable reservoir system**

RECOMMENDED TO CHANGE EVERY 12 MONTHS

The customer acknowledges that water, like other liquids, can cause damage to surfaces. The customer takes full responsibility for placing the cooler within a residence or business, and acknowledges that failure to address drips, leaks or spillages is at the customer's risk.