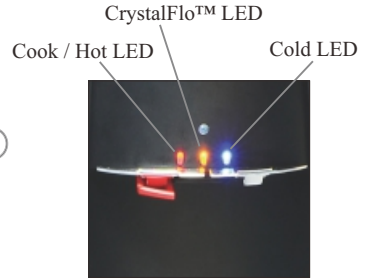




K2

Water Dispenser User Manual



LED Indicator Lights



CrystalFlo™ Water Cartridge

FEATURES

1. LED Indicator Lights

Cold LED (Blue – On when cooler is connected to power)

Cook / Hot LED (Green / Red – GREEN – C&C Model or Hot Tank Switch in OFF position – RED – Hot Tank Switch is ON)

CrystalFlo™ LED (Yellow – Flash when CrystalFlo™ timer reaches set point) – light not activated for any other function

2. Light sensor (Activates Power save function when room lights are turned off)

3. Cold Water Lever – Depress lever to dispense water. Release lever to stop.

4. Hot/Cook Water Lever

Hot Water Lever (with Child Resistant Safety Feature) – Pinch the RED lever upwards, and depress faucet lever to dispense water. Release lever to stop.

Cook Water Lever – Depress lever to dispense water. Release lever to stop.

5. Dispense Area Lighting

Nightlight (Blue – On when cooler is connected to power)

Pour Area Light (White – on during water dispense)

6. Drip Tray – Dishwasher Safe. Snaps in and out. Position glass or cup over center to avoid spills.

7. Cup Dispenser – Integrated spring loaded cup dispenser (9oz flat bottom)

8. Hot Water Activation Switch – Located on the back of product near the top right corner (when viewed from rear of product)

9. Water Outlet – Hot (or Ambient) and Cold water is dispensed from this location

■ Product may not appear exactly as shown

THANK YOU FOR BUYING A CRYSTAL MOUNTAIN WATER COOLER!

GETTING STARTED

Receiving

Inspect the cooler box immediately and carefully for any evidence of shipping or handling damage before signing to receive goods. In case of shipping damages, claims should be filed immediately with the carrier. Please note that the carrier will not accept claims for any damage discovered after signing for UNINSPECTED GOODS.

Ensure the cooler stands upright for 24 hours before plugging it in.

Install Base Plate

1. Stand cooler upright on flat, smooth floor.
2. Align side plate with base (Figure 1), and slide into base to locked position (Figure 2).
3. Repeat for opposite side (Figure 3), (Figure 4).

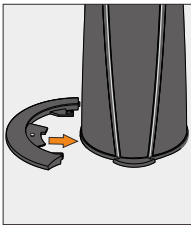


Figure 1



Figure 2

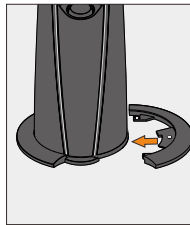


Figure 3

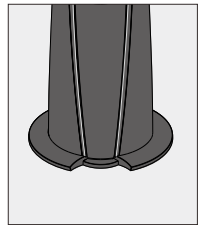


Figure 4

Locate Water Dispenser

1. Place the water cooler indoors, on a flat level surface in a cool shaded location near a grounded wall outlet.
2. Position water dispenser so that the back of the unit is a minimum of 4 inches / 10 cm away from the wall to ensure proper ventilation (Figure 5).
3. Install a bottle of water on the top of the water cooler (Figure 6).
- Note: To prevent water leaks, a NON-SPILL Bottle Cap MUST be installed on the bottle (Figure 7).**
4. Ensure that the hot water switch near the top of the rear panel is turned off. (Figure 8).

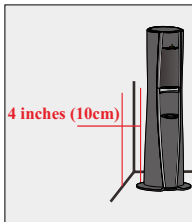


Figure 5

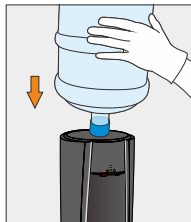


Figure 6

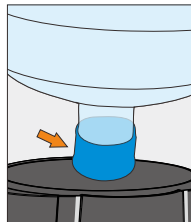


Figure 7

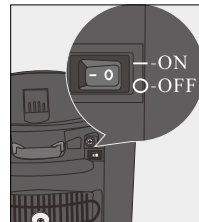


Figure 8

Provide Electricity

Ensure that the available power supply matches the cooler's voltage specifications indicated on the nameplate label (located at the top/rear of unit).

Plug power supply cord into receptacle.

Please ensure that cooler is set up so as access to the power outlet and plug is unobstructed.

Note: To provide additional protection from the risk of shock, this unit **MUST** be connected to a ground fault circuit interrupter (GFCI) outlet at all times. Use of an extension cord will void any warranties.

Prime Water System (Required during initial setup and after replacement of CrystalFlo™ Water Cartridge)

Depress the **Hot** water lever to fill the hot tank.

When water begins to flow from the hot outlet the tank is full (approx. 1 minute)

The Cold water tank will fill automatically (approx. 3 minutes)

Activate Heating Function (H&C Model Only)

Ensure Priming of Hot water system is complete before starting this step

Notice: Hot (Heated) water will not be dispensed by the cooler until the hot switch has been activated (located at the top/rear of unit).

Turn on the hot water switch

- To disable the heating function (Hot Water), turn off the hot water switch (Figure 9)

DO NOT draw water from the cooler for about 30 minutes to let the water cool or heat.

Optimum water temperatures will be reached after several hours of operation.

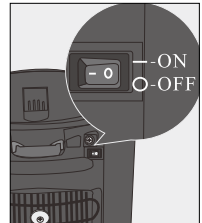


Figure 9

DISPENSING WATER

The CrystalFlo™ Water Cartridge has been tested and sanitized prior to packaging. During transit dust and odors may accumulate in the water tanks and lines. Dispense and dispose of at least 1 quart (1 Liter) of water prior to drinking any water.

Cold Water Dispensing

The temperature control of the cold water is preset to dispense water between 37-50°F (3 to 10°C)

Optimum cold water temperatures will be reached after 1-2 hours of operation. During this time the compressor could run continuously. This is normal.

1. Position bottle, glass or other container below water outlet
2. Depress (push downwards) cold water lever to start cold water flow (Figure 10)
3. Release cold water lever once desired fill level is achieved

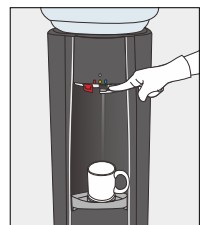


Figure 10

Hot Water Dispensing

The temperature control of the hot water is preset to dispense water between 169-203°F (76 to 95°C)

CAUTION

This unit dispenses water at temperatures that can cause severe burns.

This appliance is not intended for use by persons (including children) with reduced physical, sensory or mental capabilities, or lack of experience and knowledge, unless they have been given supervision or instruction concerning use of the appliance by a person responsible for their safety.

Children should be supervised to ensure that they do not play with the appliance.

Optimum hot water temperatures will be reached after 20-30 minutes

1. Position bottle, glass or other container below water outlet
2. Push the **RED** lever upwards (Figure 11), (Figure 12), and depress faucet lever to dispense water (Figure 13)
3. Release hot water lever once desired fill level is achieved

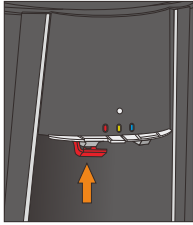


Figure 11

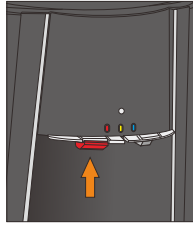


Figure 12

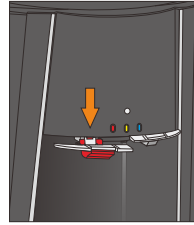


Figure 13

CLEANING

Do not immerse the unit in water for cleaning.

External: Disconnect power supply cord (Figure 14), use only mild dishwashing liquid or cleaning products and a soft cloth for cleaning the exterior surfaces (Figure 15). DO NOT use bleach or abrasive cleaners. Use a vacuum cleaner to remove dirt and lint from the condenser (Figure 16). The unit should be cleaned every 3 months, except where fingers touch the temperature selectors, which can be wiped often with hygienic wipes or mild cleaning products.

Caution: Do not clean unit with pressure washer.

Ensure the following when cooler is to be serviced:

Turn off the hot water switch and disconnect power supply cord (Figure 17).

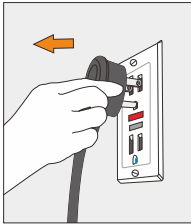


Figure 14

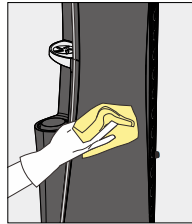


Figure 15

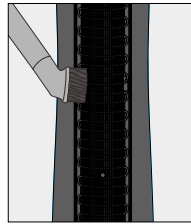


Figure 16

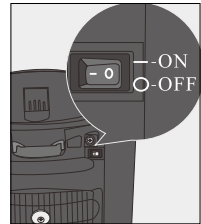


Figure 17

Replacement of CrystalFlo™ Water Cartridge

A flashing yellow light above the faucet levers will alert you to when the CrystalFlo™ Water Cartridge should be replaced. The system has been pre-set to provide indication after a period of 12 months of use. User may operate the cooler as normal until the bottle has been emptied. It is also advised to replace the CrystalFlo™ cartridge if there is a leak from the cartridge, taste problem or discoloration to the water.

Note: To reset the life timer system, the CrystalFlo™ is required to be removed from the dispenser for a minimum of 15 seconds while the unit is connected to the mains power supply.

1. Place a glass or other container below the water outlets (to catch drips)(Figure 18), and unlatch the Top Cover Locking Clip (located inside of the Bottle Installation area)(Figure 19), and open Top Cover (Figure 20).
2. Pull CrystalFlo™ Water Cartridge upwards to remove (Figure 21). Do not squeeze the water reservoir as water could leak out. In addition, it may be helpful to have a bucket nearby to place the used CrystalFlo™ in.

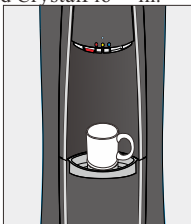


Figure 18

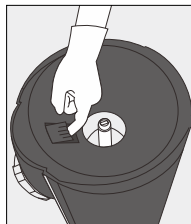


Figure 19

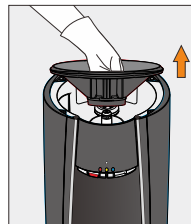


Figure 20

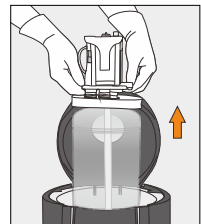


Figure 21

3. Please recycle the CrystalFlo™ whenever possible, otherwise dispose of responsibly
4. Ensure seal is properly installed on the Inlet/Outlet tube of the CrystalFlo™ Water Cartridge assembly (may have shifted during shipment or un-packaging)
5. Align CrystalFlo™ Water Cartridge with openings in cooler, and push downwards into place (Figure 22). Ensure that foam seal is pushed down and seals the reservoir completely.
6. Close the top cover (push downwards to lock into place) (Figure 23 and Figure 24). If cover does not close completely, make sure that CrystalFlo™ is inserted completely.
7. Install replacement bottle (Figure 25)
8. Prime water system (see section for Prime Water System)

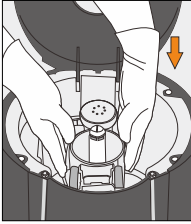


Figure 22

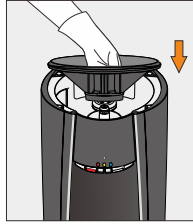


Figure 23



Figure 24

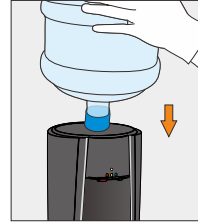
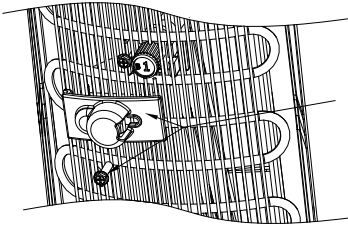


Figure 25

DRAIN COVER INSTALLATION



Remove 1 Drain Assembly mounting Screw

Install Drain Cover of PLC-C141051 (aligning hole with removed screw)
Reinstall screw

Note: Screw Installation Torque 4.5kgf.cm (3.9 in.lb)

SUB-C200743 - 20 Set Bulk Pack - EV/K2 Drain Cover
SUB-C200744 - 100 Set Bulk Pack - EV/K2 Drain Cover

CAUTION! ALWAYS DRAIN WATER COMPLETELY BEFORE SHIPPING OR STORING THE COOLER

TROUBLESHOOTING

Water Leaks

- If water dripping from above, first try to replace the water bottle.
- If water leaking (or not bottle related), unplug Dispenser, remove bottle and call 1-800-878-6422 for assistance

Water Not Dispensing

- Ensure Hot/Cold tanks have been primed
- Ensure that the water selection lever is fully depressed
- Ensure all internal tubing is free of any holes, cuts or cracks.

Not Cooling

- Optimum cold water temperatures will be reached after 1-2 hours of operation
- Ensure that the dispenser is at least 4 inches (10cm) from the wall to provide sufficient ventilation
- High usage may deplete the cold water reservoir faster than the cooler can cool it
- If the water still isn't cold, please call 1-800-878-6422 for assistance

No Hot Water

- Optimum hot water temperatures will be reached after 15-20 minutes
- Ensure that the Hot Water Switch (located at the top of the back panel) is turned on
- If the water still isn't hot, please call 1-800-878-6422 for assistance

Dispenser is Noisy

- Ensure that the dispenser is positioned on a flat, level surface
- Ensure that the bottle is not empty. If empty, replace it

SAFETY PRECAUTIONS

WARNING

To reduce risk of injury and property damage, user must read this entire guide before assembling, installation and operation of the dispenser.

Failure to follow the instructions in this manual can cause personal injury or property damage.

This product dispenses water at very high temperatures. Failure to use properly can cause personal injury.

When operating this dispenser, always exercise basic safety precautions, including the following:

- Prior to use, this dispenser must be assembled and installed in accordance with this manual.
- Install indoors on a flat level surface only. Place dispenser in a dry place away from direct sunlight. Do NOT use outdoors.
- This appliance is intended to be used in household and similar applications such as
 - Staff kitchen areas in shops, offices and other working environments;
 - Farm houses and by clients in hotels, motels and other residential type environments;
 - Bed and breakfast type environments;
 - Catering and similar non-retail applications.
- Do NOT place dispenser into an enclosed space or cabinet.
- This dispenser is intended for dispensing water only. Do NOT use other liquids. Never use any other liquid in the dispenser other than known and microbiologically safe bottled water.
- Do not use an extension cord. Use of an extension cord will void any warranties.
- **To provide additional protection from the risk of shock, this unit MUST be connected to a ground fault circuit interrupter (GFCI) outlet at all times.**
- If the supply cord is damaged, it must be replaced or assembled with matched power cord available from the manufacturer or its service agent.
- Always grasp plug and pull straight out from outlet. Never unplug by pulling on power cord.
- To protect against electric shock, do NOT immerse cord, plug, or any other part of dispenser in water or other liquids.
- This appliance is not intended for use by persons (including children) with reduced physical, sensory or mental capabilities, or lack of experience and knowledge, unless they have been given supervision or instruction concerning use of the appliance by a person responsible for their safety.
- Children should be supervised to ensure that they do not play with the appliance.
- Use with caution only.
- Repairs should only be performed by a certified technician. Please contact us at 1-800-878-6422 for assistance

Services Required:

See nameplate located at the top/rear of the dispenser

The customer acknowledges that water, like other liquids, can cause damage to surfaces. The customer takes full responsibility for placing the cooler within a residence or business, and acknowledges that failure to address drips, leaks or spillages is at the customer's risk.

The Warranty and Intertek Testing Services (ETL) and CE listings for the coolers are invalidated if any alteration, modification, or use or misuse in combination with any other machine or devices is deemed to be the source of any claim. The manufacturer accepts no liability (including for bodily injury) resulting from any alteration, misuse, neglect, accidents, improper installations or repairs.

This unit is designed to be used typical residential and office type environments within a temperature range of 50~96.8°F (10~36°C)

The unit is rated IPX0. (This unit is not protected against ingress of water)

For more information on this product, please visit www.crystalcoolers.com and below QR code.

