



BLIZZARD

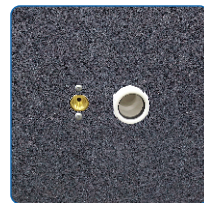
*POU(Plumbed-In) Water Dispenser
User Manual*



Gooseneck Faucet



Bubbler



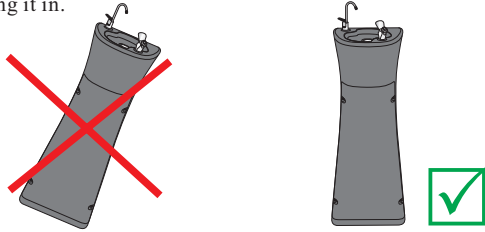
Drain Outlet

■ Parts may not appear exactly as shown

THANK YOU FOR BUYING A CRYSTAL MOUNTAIN WATER COOLER!

RECEIVING

Inspect the cooler box immediately and carefully for any evidence of shipping or handling damage before signing to receive goods. In case of shipping damage, claims should be filed immediately with the carrier. Please note that the carrier will not accept claims for any damage discovered after the signing for UNINSPECTED GOODS. Ensure the cooler stands upright for 24 hours before plugging it in.



INSTALLATION

Installation should only be executed by properly trained personnel. The connection must be to the potable mains water supply and should be via a shut off valve. An anti-flood device should be fitted as close as possible to the mains connection point. In line with local regulations, a check or non-return valve must also be fitted prior to the equipment.

Water Inlet Pressure:

- Minimum 20PSI (0.138MPa)
- Maximum 80PSI (0.552MPa)
- Where pressures exceed 80PSI (0.552MPa) a Pressure Reducing Valve must be fitted

Carefully lay the box on one side and undo the bottom box flaps (Figure 1, Figure 2 and Figure 3).



Figure 1

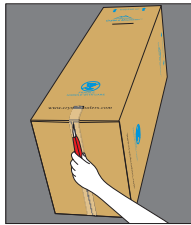


Figure 2

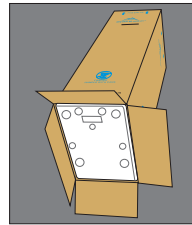


Figure 3

Ensure the bottom flaps are folded open when you return the unit to the upright position (Figure 4).

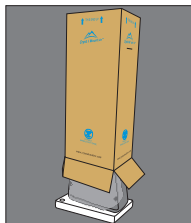


Figure 4

Caution: Please note that the unit should not be laid flat for more than a few seconds.

To unpack the unit, undo the top flaps of the box and remove the gooseneck faucet spout, waste sealer ring (spare part) and any documentation from the storage location in the top insert.

Open the top insert, remove the power cord. Lift the box over the unit to remove.

Remove all packaging material and recycle or dispose of as appropriate.

Remove the plastic pipe, set up the gooseneck faucet spout. Please note: keep water outlet facing towards the inside top of cooler to avoid water dripping to floor. Take the unit to the chosen location. Ensure that waste pipe is in the correct location to fit to the waste fitting at the rear of the machine if using the plumbed-in drain feature. Thoroughly flush the water supply line with potable water. Connect the flexible water supply pipe to the water inlet position at the rear of the water cooler (Figure 5 and Figure 6).

The cooler is to be filled completely and rinsed through with potable water. Turn on the water supply and allow the system to fill (Figure 7). Ensure a good steady flow from each faucet by depressing the button or the handle one at a time (Figure 8). Ensure pressure on each tap separately to allow air to escape from the reservoir. Care must be taken so as not to trip the anti-flood device by allowing 5 seconds between each continuous draw of 3 liters. (check specifications of the anti-flood device you employ to confirm these #'s)

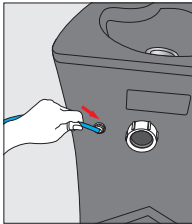


Figure 5

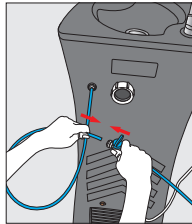


Figure 6

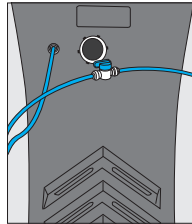


Figure 7

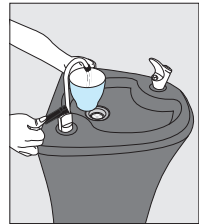


Figure 8

Turn off the water supply (Figure 9) and disconnect it from the water dispenser. Remove the cold tank drain cap to drain the cold system (Figure 10 and Figure 11). When the flow stops, replace the cold tank drain cap.(Figure 12)

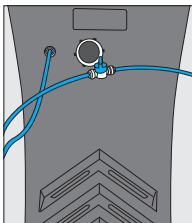


Figure 9

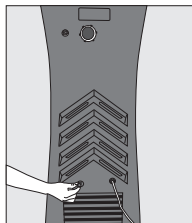


Figure 10

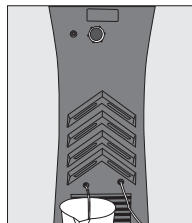


Figure 11

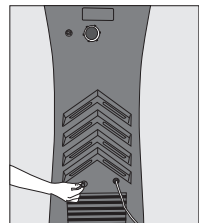


Figure 12

Reposition the water cooler to complete installation. Connect the waste system if plumbing it in. Reconnect the water supply line, ensuring the anti-flood device is as near to the water supply point as possible, in correct sequence with any Pressure Reducing Valve (also recommended for excellence and safety in installations).

Draw at least 3 liters of water from each faucet to dispel all air from the system; taking care - as before - not to trip the anti-flood device. Connect power cord plug of the dispenser to power socket and allow the water cooler to reach normal operating temperature.

Dry off any water spillages. Record the date of installation, devices installed and serial number of the water cooler in the appropriate document(s). A photograph of the final installation is useful for possible future insurance purposes.

GENERAL OPERATION

To draw cold water, depress either the **BUBBLER** button or **GOOSENECK FAUCET** handle. When the button or handle is released, the water will stop flowing. (Figure 13 to Figure 14)



Figure 13

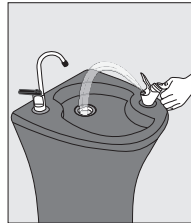


Figure 14

CLEANING

External: With the electrical power off, use only mild dishwashing liquid or cleaning products and a soft cloth for cleaning the exterior surfaces (Figure 15 and Figure 16). **DO NOT USE** bleach or abrasive cleaners. Use a vacuum cleaner to remove dirt and lint from the condenser. The exterior of the unit should be cleaned every 3 months, except where fingers touch the **BUBBLER** button and **GOOSENECK FAUCET** handle, which can be wiped often with hygienic wipes or mild food-grade disinfecting or cleaning products.



Figure 15

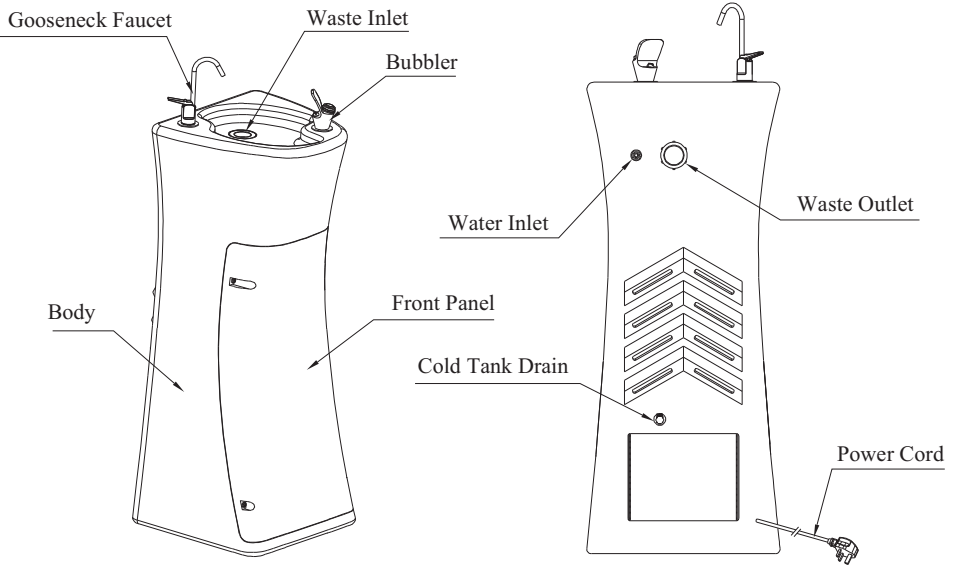


Figure 16

Internal: In the interest of hygiene it is recommended that the water cooler is sanitised - disinfected and cleaned - every 6 months. Please contact your distributor for further information.

Caution: *This operation should be carried out by properly trained personnel. Only use approved food grade sanitising products. The use of these products must be in accordance with the manufacturer's safety instructions and recommendations.*

**CAUTION! ALWAYS DRAIN WATER COMPLETELY
BEFORE SHIPPING OR STORING THE WATER COOLER**



Main View

Back View

Services required: Water Inlet: $\frac{1}{4}$ " John guest fitting.

Water pressures: Minimum 20psi (0.13MPa)

Maximum 80psi (0.55MPa)

(Where pressures exceed 80psi (0.55MPa) a Pressure Reducing Valve MUST be installed.)

Waste outlet: $1\frac{1}{2}$ " (40mm) multi-fit connection

WARNING:

The warranty and Underwriters' Laboratory and CE listings for the coolers are invalidated if any alteration, modification, or use or misuse in combination with any other machine or devices is deemed to be the source of any claim. The manufacturer accepts no liability (including for bodily injury) resulting from any alteration, misuse, neglect, accidents, improper installations or repairs.

The Red Faucet dispenses hot water during normal operation that may cause severe burns.

This appliance is not intended for use by persons (including children) with reduced physical, sensory or mental capabilities, or lack of experience and knowledge, unless they have been given supervision or instruction concerning use of the appliance by a person responsible for their safety.

Children should be supervised to ensure that they do not play with the appliance.

If the supply cord is damaged, it must be replaced by a special cord or assembly available from the manufacturer or its service agent.



This marking indicates that this product should not be disposed with other household wastes throughout the EU. To prevent possible harm to the environment or human health from uncontrolled waste disposal, recycle it responsibly to promote the sustainable reuse of sustainable resources. To return your used device, please use the return and collection systems or contact the retailer where the product was purchased. They can take this product for environmental safe recycling.

The customer acknowledges that water, like other liquids, can cause damage to surfaces. The customer takes full responsibility for placing the cooler within a residence or business, and acknowledges that failure to address drips, leaks or spillages is at the customer's risk.

Environmental application temperature: 10~32°C.

The unit is rated IP10. (This unit is not protected against ingress of water)

For more information on this product, please visit www.crystalcoolers.com